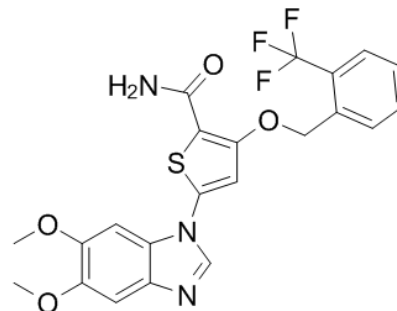


Product Name : GW843682X
Cat. No. : PC-42779
CAS No. : 660868-91-7
Molecular Formula : C₂₂H₁₈F₃N₃O₄S
Molecular Weight : 477.4562
Target : Polo-like Kinase (PLK)
Solubility : 10 mM in DMSO



Biological Activity

GW843682X is a potent and selective inhibitor of **PLK1** (IC₅₀=2.2 nM) and **PLK3** (IC₅₀=9 nM). GW843682X displays >1,000-fold lower than cell CDK-2/cyclin A, CDK1/cyclin A and aurora A. GW843682X induces a transient G2-M arrest, mitotic spindle defects, and a multinucleate phenotype.

References

- Lansing TJ, et al. *Mol Cancer Ther.* 2007 Feb;6(2):450-9.
Nihal M, et al. *Cell Cycle.* 2011 Apr 15;10(8):1303-11.

Caution: Product has not been fully validated for medical applications. Lab Use Only!

E-mail: tech@probechem.com